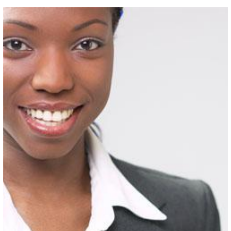
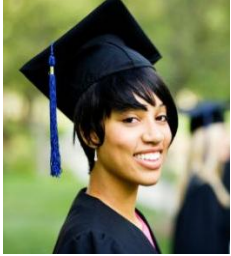




Support Our NABA Scholars!

25 YEARS OF INVESTING IN GENERATIONS OF LEADERS
National Association of Black Accountants, Inc. – Austin Cen-Tex Chapter



“As a college graduate, I will become a professional member of NABA. I intend to do charitable work such as providing free tax accounting services for underprivileged persons in the community on behalf of NABA. I also intend to educate and encourage high school students interested in pursuing higher education about the opportunities and benefits available in the accounting profession and being a member of this highly recognized organization. I would also love to work with the student members of NABA by providing exemplary mentoring and strategic goal-setting in order that they reach the pinnacle of their success in the accounting profession. The importance of being involved in the community has been embedded in me and has always been an important part of my life. My involvement in NABA is one which I take very seriously and plan to use to the benefit of this organization as well as the larger community keeping in mind at all times that as minorities and professionals that have been granted opportunities which many others can only dream of, we are obligated to be "Lifting as we Climb."

Kemba Valentine
NABA Student Chapter Liaison

PLEASE COMPLETE FORM ON BACK

by selecting a donation amount(s)

- \$ 100: 5 *sets of NABA Student Member Business Cards* to facilitate networking and interviewing opportunities with corporate sponsors
- \$ 250: 1 Registration/Lodging at the 2011 NABA Fall Southwest Regional Student Conference in Austin, Texas **OR** 1 Financial Literacy presentation
- \$ 500: Providing 10 backpacks full of school supplies for the annual Back-to-School Parade **OR** 1 *Etiquette Luncheon* for NABA student members
- \$1,000: 1 student's one-week residency at the *Accounting Career Awareness Program* for High School Junior/Seniors, **OR** 1 *Day with NABA* Reception
- \$2,000: 1 student registration/lodging at the *2011 National Convention in Orlando, Florida*
- \$5,000: 5 student scholarships at the *April 2011 Scholarship & Awards reception and CPE Expo*
- \$_____ Other Amount

OR DONATE ONLINE!

www.nabaaustincen-tex.org

by selecting your donation amount and pay by credit card.

Or return the form on back with your payment.

“ I would like to extend my sincerest appreciation for NABA Austin Cen-Tex's support in getting us to the 2010 NABA Southwest Regional Student Conference that took place in Austin, Texas on October 14-16, 2010. The support delivered ranged from printing business cards, to arranging hotel accommodations, subsidizing conference fees, and personal mentorship. Your continued commitment is invaluable and we will continue to do all that we can to support NABA in future endeavors.”

Matthew Little
NABA Student Chapter President



NABA Austin Cen-Tex

Post Office Box 142572
Austin, Texas 78714

Phone (512) 297-4987
www.nabaustincextex.org

Support Our NABA Scholars Donation Form

Contact Information

Company Name _____

Donor Name _____ Title _____

Address _____

Address 2 _____

City _____ State _____ Zip _____

E-mail _____ Phone _____

Sponsorship Level

- \$ 100: 5 **sets of NABA Student Member Business Cards** to facilitate networking and interviewing opportunities with corporate sponsors
- \$ 250: 1 Registration/Lodging at the 2011 NABA Fall Southwest Regional Student Conference in Austin, Texas **OR 1 Financial Literacy presentation**
- \$ 500: Providing 10 backpacks full of supplies for the annual Back-to-School Parade **OR 1 Etiquette Luncheon** for NABA student Members
- \$1,000: 1 student's one-week residency at the **Accounting Career Awareness Program** for High School Junior/Seniors, **OR 1 Day with NABA Reception**
- \$2,000: 1 student registration/lodging at the **2011 National Convention in Orlando, Florida**
- \$5,000: 5 student scholarships at the **April 2011 Scholarship & Awards reception and CPE Expo**
- \$ _____ Other Amount

\$ _____ Total Donation

Payment Options

- PayPal: please visit our website to donate at www.nabaustincextex.org
- Check Enclosed. Make payable to: NABA Austin Cen-Tex Chapter, PO Box 142572, Austin, TX 78714